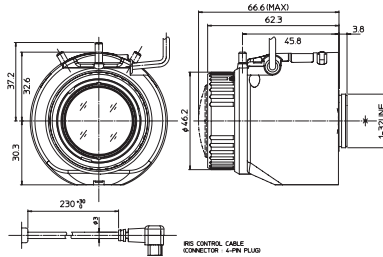


6MP

DV2.2x4.1SR4A-SA2L

Applicable camera (model) 1 2/3 1/1.8 1/2 1/3 1/4

Applicable to 1/1.8



Unit : mm

Day Night

Fuji HD 6MP

Vari-Focal Wide Angle DC Auto Iris C Mount Metal Mount ND Filter Long Cable Aspherical Lens Large Aperture Ratio RoHS Compliant

Focal Length (mm)	4.1 - 9 (2.2x)
Iris Range	F1.6 - T360
Operation	Zoom Manual
	Focus Manual
Angle of View (H × V)	Iris Auto (DC type)
	1/1.8 [*] WIDE 100° 11' × 74° 21'
	TELE 45° 17' × 33° 59'
	1/2 [*] WIDE 89° 33' × 66° 42'
	TELE 40° 43' × 30° 34'
	1/3 [*] WIDE 66° 42' × 49° 50'
	TELE 30° 34' × 22° 56'
	1/4 [*] WIDE 49° 50' × 37° 18'
Angle of View (H × V)	TELE 22° 56' × 17° 12'
	1/1.8 [*] WIDE 109° 23' × 60° 32'
	TELE 49° 18' × 27° 47'
	1/2 [*] WIDE 97° 52' × 54° 20'
	TELE 44° 21' × 24° 59'
	1/3 [*] WIDE 72° 47' × 40° 39'
	TELE 31° 17' × 18° 44'
	1/4 [*] WIDE 54° 20' × 30° 27'
TELE 24° 59' × 14° 3'	
Focus Range (From the Lens Front) (m)	∞ - 0.3m
Mass (g)	135

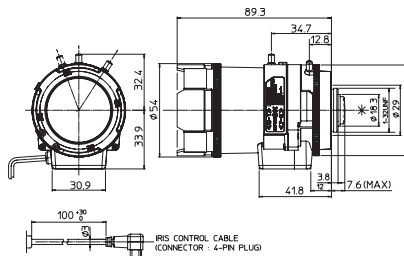
5MP

DV4x12.5SR4A-SA1

Applicable camera (model) 1 2/3 1/1.8 1/2 1/3 1/4

4 x

Applicable to 1/1.8



Unit : mm

Day Night

Fuji HD 5MP

Vari-Focal Long Focal DC Auto Iris C Mount Metal Mount ND Filter Long Cable Aspherical Lens Large Aperture Ratio RoHS Compliant

* This product is also available in manual iris type.

Focal Length (mm)	12.5 - 50 (4x)
Iris Range	F1.6 - T360
Operation	Zoom Manual
	Focus Manual
Angle of View (H × V)	Iris Auto (DC type)*1
	1/1.8 [*] WIDE 32° 54' × 24° 37'
	TELE 8° 14' × 6° 13'
	1/2 [*] WIDE 29° 32' × 22° 7'
	TELE 7° 26' × 5° 36'
	1/3 [*] WIDE 22° 7' × 16° 34'
	TELE 5° 36' × 4° 12'
	1/4 [*] WIDE -
Angle of View (H × V)	TELE -
	1/1.8 [*] WIDE 35° 52' × 20° 6'
	TELE 8° 57' × 5° 5'
	1/2 [*] WIDE 32° 12' × 18° 3'
	TELE 8° 4' × 4° 35'
	1/3 [*] WIDE 24° 6' × 13° 32'
	TELE 6° 5' × 3° 27'
	1/4 [*] WIDE -
TELE -	
Focus Range (From the Lens Front) (m)	∞ - 0.8
Mass (g)	175

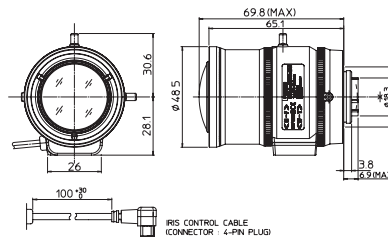
3MP

DV3.8x4SR4A-SA1

Applicable camera (model) 1 2/3 1/1.8 1/2 1/3 1/4

3.8 x

Applicable to 1/1.8



Unit : mm

Day Night

Fuji HD 3MP

Vari-Focal Wide Angle DC Auto Iris C Mount Metal Mount ND Filter Long Cable Aspherical Lens Large Aperture Ratio RoHS Compliant

* This product is also available in manual iris type.

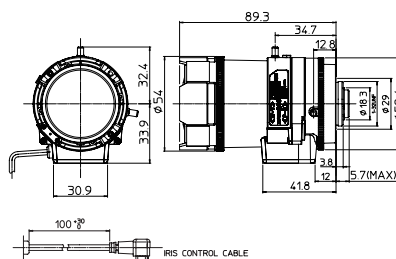
Focal Length (mm)	4 - 15.2 (3.8x)
Iris Range	F1.5 - T360
Operation	Zoom Manual
	Focus Manual
Angle of View (H × V)	Iris Auto (DC type)*1
	1/1.8 [*] WIDE 103° 27' × 77° 03'
	TELE 27° 23' × 20° 34'
	1/2 [*] WIDE 92° 42' × 69° 08'
	TELE 24° 38' × 18° 29'
	1/3 [*] WIDE 69° 08' × 51° 40'
	TELE 18° 29' × 13° 53'
	1/4 [*] WIDE 51° 40' × 38° 41'
Angle of View (H × V)	TELE 13° 53' × 10° 25'
	1/1.8 [*] WIDE 113° 02' × 62° 46'
	TELE 29° 48' × 16° 49'
	1/2 [*] WIDE 101° 14' × 56° 21'
	TELE 26° 49' × 15° 07'
	1/3 [*] WIDE 75° 25' × 42° 09'
	TELE 20° 08' × 11° 21'
	1/4 [*] WIDE 56° 21' × 31° 34'
TELE 15° 07' × 8° 31'	
Focus Range (From the Lens Front) (m)	∞ - 0.3
Mass (g)	120

DV10x8SR4A-SA1

Applicable camera (model) 1 2/3 1/2 1/3 1/4

10 x

Applicable to 1/2



Unit : mm

Day Night

Fuji HD 3MP

Vari-Focal Long Focal DC Auto Iris C Mount Metal Mount ND Filter Long Cable Aspherical Lens Large Aperture Ratio RoHS Compliant

* This product is also available in manual iris type.

Focal Length (mm)	8 - 80 (10x)
Iris Range	F1.6 - T360(Equivalent to F360)
Operation	Zoom Manual
	Focus Manual
Angle of View (H × V)	Iris Auto (DC type)*1
	1/1.8 [*] WIDE -
	TELE -
	1/2 [*] WIDE 44° 33' × 34° 58'
	TELE 4° 42' × 3° 32'
	1/3 [*] WIDE 34° 58' × 26° 35'
	TELE 3° 32' × 2° 39'
	1/4 [*] WIDE 22° 40' × 17° 06'
Angle of View (H × V)	TELE 2° 22' × 1° 47'
	1/1.8 [*] WIDE -
	TELE -
	1/2 [*] WIDE 49° 39' × 29° 10'
	TELE 5° 07' × 2° 53'
	1/3 [*] WIDE 38° 16' × 22° 05'
	TELE 3° 50' × 2° 09'
	1/4 [*] WIDE 24° 42' × 14° 03'
TELE 2° 35' × 1° 27'	
Focus Range (From the Lens Front) (m)	∞ - 1.5
Mass (g)	180

* 1 : The iris automatically closes when the camera is turned off. * 2 : Angle of view values for the 1/2.7 model.

* Each of the above products is also available in long cable type (230 mm).