

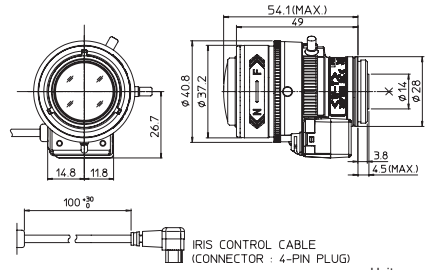
Vari-Focal Day&Night Type

3MP

YV2.8x2.8SR4A-SA2

2.8x

Applicable to
1/2.7



IRIS CONTROL CABLE
(CONNECTOR : 4-PIN PLUG)

Unit : mm

Day Night

FHD 3MP

Vari-Focal Wide Angle DC Auto Iris CS Mount Metal Mount ND Filter Long Cable Aspherical Lens Large Aperture Ratio RoHS Compliant
VARI WIDE DC CS-mt METAL ND AT F1.3 RoHS

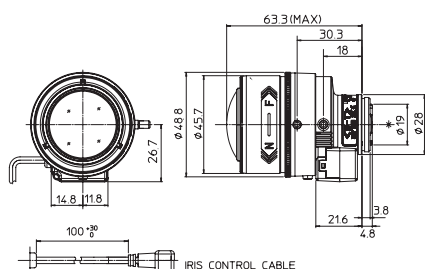
Applicable camera (model) **1 2/3 1/2 1/2.7 1/3 1/4**

Focal Length (mm)	2.8 - 8 (2.8x)	
Iris Range	F1.3 - T360	
Operation	Zoom	Manual
	Focus	Manual
Angle of View (H x V)	1/2.7"	WIDE 112° 24' x 81° 16'
		TELE 38° 48' x 29° 05'
	1/3"	WIDE 100° 34' x 73° 22'
Angle of View (H x V)	1/3"	TELE 35° 16' x 26° 26'
		WIDE 73° 22' x 54° 18'
	1/4"	TELE 26° 26' x 19° 49'
Angle of View (H x V)	1/2.7"	WIDE 124° 51' x 65° 26'
		TELE 42° 17' x 23° 43'
	1/3"	WIDE 111° 8' x 59° 19'
Aspect Ratio 16:9	1/3"	TELE 38° 27' x 21° 35'
	1/4"	WIDE 80° 23' x 44° 13'
1/4"	TELE 28° 47' x 16° 13'	
Focus Range (From the Lens Front) (m)	∞ - 0.3	
Mass (g)	60	

YV3x6SR4A-SA2

3x

Applicable to
1/2.7



IRIS CONTROL CABLE
(CONNECTOR : 4-PIN PLUG)

Unit : mm

Day Night

FHD 3MP

Vari-Focal DC Auto Iris CS Mount Metal Mount ND Filter Long Cable Aspherical Lens Large Aperture Ratio RoHS Compliant
VARI DC CS-mt METAL ND AT F1.4 RoHS

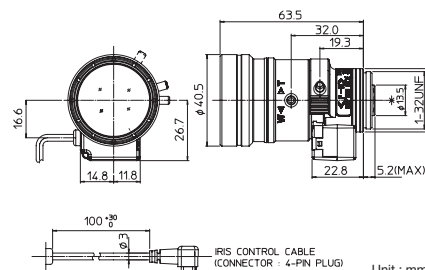
Applicable camera (model) **1 2/3 1/2 1/2.7 1/3 1/4**

Focal Length (mm)	6 - 18 (3x)	
Iris Range	F1.4 - T360	
Operation	Zoom	Manual
	Focus	Manual
Angle of View (H x V)	1/2.7"	WIDE 51° 5' x 37° 50'
		TELE 16° 60' x 12° 45'
	1/3"	WIDE 46° 13' x 34° 18'
Angle of View (H x V)	1/3"	TELE 15° 27' x 11° 36'
		WIDE 34° 18' x 25° 35'
	1/4"	TELE 11° 36' x 8° 42'
Angle of View (H x V)	1/2.7"	WIDE 55° 56' x 30° 48'
		TELE 18° 30' x 10° 26'
	1/3"	WIDE 50° 35' x 27° 54'
Aspect Ratio 16:9	1/3"	TELE 16° 50' x 9° 28'
	1/4"	WIDE 37° 27' x 20° 53'
1/4"	TELE 12° 37' x 7° 7'	
Focus Range (From the Lens Front) (m)	∞ - 0.3	
Mass (g)	95	

YV3.3x15SR4A-SA2

3.3x

Applicable to
1/2.7



IRIS CONTROL CABLE
(CONNECTOR : 4-PIN PLUG)

Unit : mm

Day Night

FHD 3MP

Vari-Focal Telephoto Long Focal DC Auto Iris CS Mount Metal Mount ND Filter Long Cable Aspherical Lens Large Aperture Ratio RoHS Compliant
VARI TELE DC CS-mt METAL ND AT F1.5 RoHS

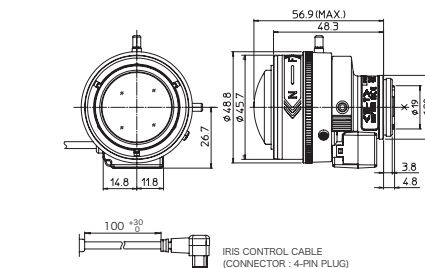
Applicable camera (model) **1 2/3 1/2 1/2.7 1/3 1/4**

Focal Length (mm)	15 - 50 (3.3x)	
Iris Range	F1.5 - T360	
Operation	Zoom	Manual
	Focus	Manual
Angle of View (H x V)	1/2"	WIDE 20° 1' x 15° 5' *2
		TELE 6° 9' x 4° 39' *2
	1/3"	WIDE 18° 14' x 13° 43'
Angle of View (H x V)	1/3"	TELE 5° 37' x 4° 14'
		WIDE 13° 43' x 10° 18'
	1/4"	TELE 4° 14' x 3° 11'
Angle of View (H x V)	1/2"	WIDE 21° 45' x 12° 20' *2
		TELE 6° 41' x 3° 49' *2
	1/3"	WIDE 19° 49' x 11° 14'
Aspect Ratio 16:9	1/3"	TELE 6° 6' x 3° 28'
	1/4"	WIDE 14° 56' x 8° 26'
1/4"	TELE 4° 36' x 2° 36'	
Focus Range (From the Lens Front) (m)	∞ - 1.0	
Mass (g)	80	

YV2.7x2.2SR4A-SA2

2.7x

Applicable to
1/2.7



IRIS CONTROL CABLE
(CONNECTOR : 4-PIN PLUG)

Unit : mm

Day Night

FHD 3MP

Vari-Focal Wide Angle DC Auto Iris CS Mount Metal Mount ND Filter Long Cable Aspherical Lens Large Aperture Ratio RoHS Compliant
VARI WIDE DC CS-mt METAL ND AT F1.3 RoHS

Applicable camera (model) **1 2/3 1/2 1/2.7 1/3 1/4**

Focal Length (mm)	2.2 - 6 (2.7x)	
Iris Range	F1.3 - T360 (Equivalent to F360)	
Operation	Zoom	Manual
	Focus	Manual
Angle of View (H x V)	1/2.7"	WIDE 132° 47' x 100° 19'
		TELE 50° 26' x 37° 54'
	1/3"	WIDE 121° 4' x 91° 20'
Angle of View (H x V)	1/3"	TELE 45° 51' x 34° 28'
		WIDE 91° 20' x 68° 43'
	1/4"	TELE 34° 28' x 25° 53'
Angle of View (H x V)	1/2.7"	WIDE 144° 08' x 82° 08'
		TELE 54° 48' x 30° 57'
	1/3"	WIDE 131° 34' x 74° 46'
Aspect Ratio 16:9	1/3"	TELE 49° 55' x 28° 11'
	1/4"	WIDE 99° 19' x 56° 19'
1/4"	TELE 37° 31' x 21° 12'	
Focus Range (From the Lens Front) (m)	∞ - 0.3	
Mass (g)	75	

* 1: The iris automatically closes when the camera is turned off.

※ Each of the above products is also available in manual type. ※ Each of the above products is also available in long cable type (230 mm).