

Pro series | Outdoor Vandal Dome Camera

IPD6132X

Day & Night 3MP HD Vandal Dome IP Camera

www.meritlilin.com



| | | |
|------------------------|------------------------------|------------------------------------|
| 2-way audio | H.264 | Back Light Compensation |
| IP67 | Day / Night | IK10 |
| IP based | SD card recording | Easy to install |

- ▶ Outdoor vandal dome
- ▶ IP67 rain and dust resistant
- ▶ Wide Dynamic Range
- ▶ IK10 impact resistant
- ▶ IR cut filter for day/night operations
- ▶ 3-megapixel resolution

Dimensions (unit in mm): Ø145 x 130

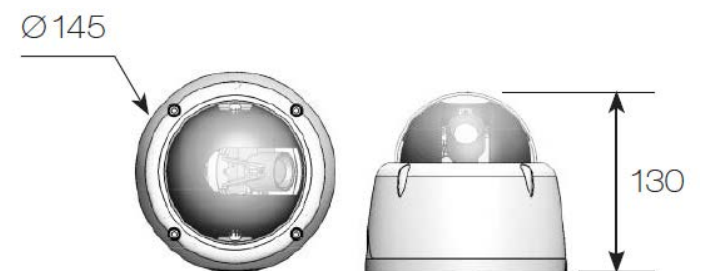
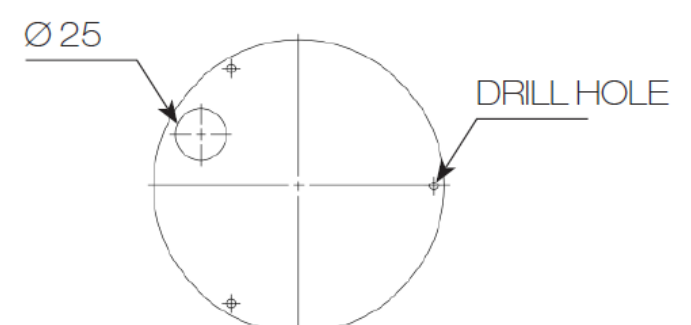


Diagram of mounting holes (unit in mm):



As with all Pro series cameras, IK10 vandal resistant rating Day & Night 3MP HD vandal resistant dome IP camera IPD6132X incorporates Sense up+, a unique technology that successfully delivers stunning video in low-light conditions. Utilizing intelligent image signal processing, AGC control, and 3D Noise Reduction, this model successfully delivers the ultimate low-light image without motion blur. The IPD6132X is capable of producing four independent video streams, different streams can be set for different applications, depending on the individual user requirements. The IP67-rated housing is designed to help the camera body withstand rain and dust and ensures operation under a multitude of harsh weather conditions.

Wind and Rain Standards

Meet international IP67 standards for dust and moisture resistant allowing you to install cameras in environments subject to wind and rain



Sense Up+

Deliver outstanding video outputs in poor light conditions without experiencing motion blur. You can see video clearly even during nighttime without sufficient lighting support



Video Security App

Available on Android and iOS – LILINViewer app provides security alarm push notification, real-time live viewing, and remote video playback



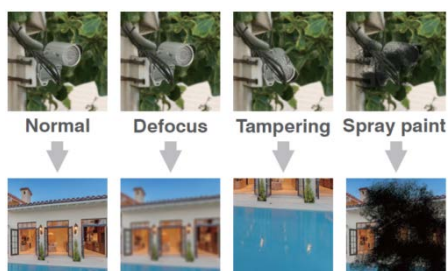
ONVIF-compliant

Open Network Video Interface Forum (ONVIF) is a standard for physical IP based security products. IPD6132X camera is ONVIF Profile S conformant



Tamper Detection

Automatically detects camera sabotage or failure. Detects any attempts to tamper with the camera – partially or completely blocking its lens or field of view



SD Cards in Sync with NAV Software

IPD6132X camera with built-in Micro SD/SDHC card slots can provide redundant video viewing and recording. You can synchronise an SD card with LILIN VMS (Video Management Software) – Navigator (NAV)



Two-way Audio Support

With 2-way audio communication, you can project your voice through the camera's speaker instead of hearing what's going on (1-way audio)



Impact Resistant

IK10-certified housing designed to protect the camera from destructive behaviour



Face Detection

Automatically detects a human face



Day and Night Operations via Removal of the IR-cut filter

IPD6132X camera was designed using a mechanical IR cut filter for increased IR sensitivity resulting in improved night time images. The removable IR-cut filter allows day and night operations even in the low lux condition providing outstanding vision



Motion Detection

Detect motion and capture the event. Motion in the selected area will provoke an alert



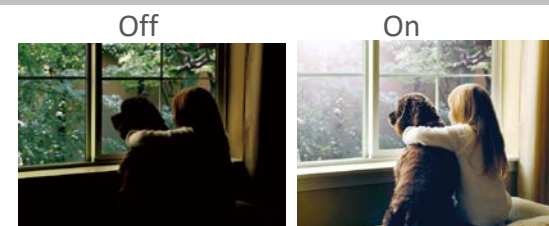
Alarm Detection

Alarm Detection is designed to provide the electronic detection of intruders



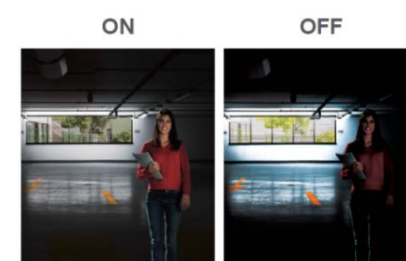
Back Light Compensation

Back Light Compensation (BLC) adjusts the exposure of the entire image to properly expose the subject in the foreground. No matter if the main object is moving toward left, right, upper, lower, or any location in the screen, BLC provides perfect exposure for an object in front of strong back light



Wide Dynamic Range

An Wide Dynamic Range image is made by taking 3 frames of the same scene and each at different shutter speeds to display details of both the darkest and brightest areas. WDR can extend image visibility under high contrast lighting scenes and improve image quality



Day & Night 3MP HD Vandal Dome IP Camera

Video performance & power

| | |
|-------------------------|---|
| Model# | IPD6132ESX3.6 |
| Low Light Mode (Colour) | 0.15 Lux at F1.4 (Low light mode) |
| Power consumption | DC12V, 6W / PoE, 7.5W |
| Power supply | DC12V ±10% / PoE (IEEE 802.3af compliant) |

Lens

| | | |
|---------------|-----------|--------------|
| Focal length | 2.8~12 mm | |
| Iris | F1.4 | |
| Angle of view | H | 91.2° ~25.5° |
| | V | 59.4° ~22.4° |
| | D | 99° ~37.3° |

Sensor

| | |
|------------------|---|
| Sensor type | 1/2.8" CMOS image sensor |
| Effective pixels | 2096 (H) x 1561 (V) = 3,271,856 (pixel) |

Certifications

| | |
|-----------|------------------|
| CE | Yes |
| FCC | Yes |
| IP rating | IP67 waterproof |
| IK rating | IK10 vandalproof |

PC requirement

| | |
|-------------|---|
| CPU | Intel Pentium 4 1.8GHz or above |
| OS | Windows 2000 , Windows XP , Windows Vista, Windows 7, Windows 8 |
| RAM | 1GB or above ,Independent Display Card |
| Web browser | Microsoft® Internet Explorer® 6 and later |

Mechanical

| | |
|------------|--------------|
| Dimensions | Ø145 x 130mm |
| Weight | 960g approx. |

Input / output

| | |
|----------------------|---|
| Live video output | CVBS 1.0Vp-p, 75 ohm, RCA connector |
| Audio input / output | Mono, 1.4 Vp-p , 50 KΩ , terminal connector |
| Alarm input / output | Digital 1 input (TTL, +3~5VDC) / 1 Output (MOS Relay contact N.O., Load max. 40VDC/300mA) |

Video streaming

| | |
|---------------------|---|
| Video compression | H.264 , Motion JPEG |
| Streaming | RTP/HTTP, RTP/TCP, RTP/UDP, Multicast |
| Bitrate | 128Kbps~8Mbps Frame rate and bit rate controllable on-the-fly VBR / CBR / GOP supported |
| IP filter | Yes |
| RTSP Authentication | On / Off |

Network security

| | |
|---------------|--|
| User accounts | 10 user accounts available |
| Access | Multiple user access levels with password protection |
| Encryption | Base 64 HTTP encryption |

Environmental

| | |
|-----------------------|---------------------------|
| Operating temperature | -40°C~+50°C (-40°F~122°F) |
|-----------------------|---------------------------|

Video resolution (H x V)

| | | |
|------------------|-------------|---|
| 3MP | 2048 x 1536 | |
| 1080P | 1920 x 1080 | |
| 720P | 1280 x 720 | |
| D1 | 720 x 480 | |
| CIF | 352 X 240 | |
| Multiple profile | Profile #1 | H.264 : up to 30 FPS @ 1920 x 1080, MJPEG : up to 30 FPS @ 720 x 480 |
| | Profile #2 | H.264 : up to 30 FPS @ 1280 x 720, MJPEG : up to 30 FPS @ 352 x 240 |
| | Profile #3 | H.264 : up to 30 FPS @ 1920 x 1080, MJPEG : up to 30 FPS @ 1280 x 720 |
| | Profile #4 | H.264 : up to 30 FPS @ 720 x 480, MJPEG : up to 15 FPS @ 1920 x 1080 |
| | Profile #5 | H.264 : up to 15 FPS @ 2048 x 1536, MJPEG : up to 15 FPS @ 720 x 480 |

Video functions

| | |
|---------------------------|--|
| Day/Night (IR-cut filter) | Colour (Day), Monochrome (Night), Auto, Schedule |
| Scanning system | Progressive scan |
| White balance | Auto / tungsten / indoor / fluorescents1 / fluorescents2 / outdoor1 / outdoor2 |
| Electronic shutter | 1/30(1/25)s~1/8000s |
| Back light compensation | Off / On |
| Privacy masking | Off / on (4 zones) |
| Auto gain control | 36 dB variable gain |
| Image effects | Brightness, Contrast, Hue, Saturation, Sharpness, Mirror, Flip |
| 2D WDR | Off / Auto / x2 / x3 / x4 |
| D/N quality setting | Yes |

Integration

| | |
|--------------------|---|
| Mobile application | Integrated to LILIN mobile app (LILINViewer) iPhone, iPad, Android support |
| Video management | ONVIF Profile S LILIN CMX3.6 NAV 1.0 Third party VMS through LILIN HTTP API |
| Firmware | Firmware upgrade via HTTP Firmware available to download at meritlilin.com |

Network

| | |
|-----------------------|--|
| Ethernet | 10Mbps / 100Mbps Base-T, RJ-45 |
| Connectivity | ONVIF Profile S |
| Users | 8 simultaneous users |
| OSD | Text overly for date, time , and camera name |
| CPU, Memory | Embedded SoC ARM11, 528MHz, 256MB DDR2, 256MB flash memory |
| Video display | LILIN Universal ActiveX & LILIN Java Applet |
| OS | Embedded Linux 2.6.32 |
| 2-way audio supported | G.711 / PCM |
| Protocols | IP, TCP, UDP, HTTP, SMTP, NTP, DDNS, UPnP, FTP, ARP, DHCP, PPPoE, DNS, RTSP, RTCP, Telnet, ICMP, IGMP, ONVIF Profile S, SNMP, SIP, Bonjour |
| Multi IP address | Yes |

Main functions

| | |
|---------------------|--|
| Sense up | Off / 1 frame / 2 frames / 3 frames / 7 frames |
| Sense up + | Yes |
| 3D Noise Reduction | Off / 1~32 selectable |
| Alarm function | Face / tampering / audio / motion / alarm detection Image upload over FTP and E-mail by face / tampering / audio / motion detection |
| SD card recording | Support Micro SD/SDHC card for circular recording (card is not included) |
| ePTZ & digital zoom | Yes, ROI is supported |
| Alarm event | FTP,SMTP, HTTP post, SD card, SAMBA |
| Alarm weighted mode | Yes |