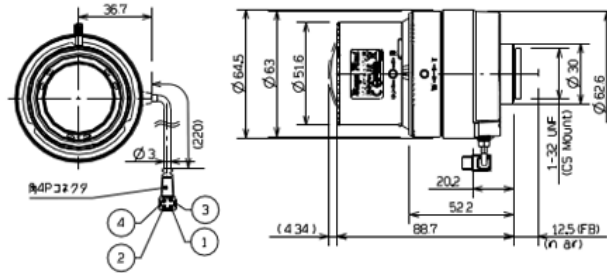


M118VP413IRCS



SPECIFICATIONS

		M118VP413IRCS																
Imager Size		1/1.8																
Mount Type		CS																
Focal Length		4.0 - 13mm																
Aperture Range		F/1.5 - Close																
Angle of View (Horizontal x Vertical)	1/1.8	Wide	105.4° x 77.6°															
		Tele	33.0° x 24.8°															
	1/2	Wide	91.7° x 67.9°															
		Tele	29.0° x 21.8°															
	1/3	Wide	67.9° x 50.6°															
		Tele	21.8° x 16.3°															
Focusing Range		0.3m - ∞																
Operation	Focus	Manual with Lock																
	Zoom	Manual with Lock																
	Iris	P-Iris																
Excitation		Bi-Polar Type																
Back Focus(in air)		15.235mm(in air)																
Wave Length		Visible Light - Near Infrared																
Operating Voltage Range		Open 3.0V Close 0.5V																
Weight		172g																
Operating Temperature		-20°C - +60°C																
Wiring Diagram																		
		<table border="1"> <thead> <tr> <th>Pin</th> <th>Appelation 名称</th> <th>Exitation 励磁</th> </tr> </thead> <tbody> <tr> <td>1</td> <td>A</td> <td>H</td> </tr> <tr> <td>2</td> <td>B</td> <td>L</td> </tr> <tr> <td>3</td> <td>B-</td> <td>H</td> </tr> <tr> <td>4</td> <td>A-</td> <td>L</td> </tr> </tbody> </table>		Pin	Appelation 名称	Exitation 励磁	1	A	H	2	B	L	3	B-	H	4	A-	L
Pin	Appelation 名称	Exitation 励磁																
1	A	H																
2	B	L																
3	B-	H																
4	A-	L																

Download

You can download the catalog and specifications.

[Download Leaflet](#) [Download Specifications](#)